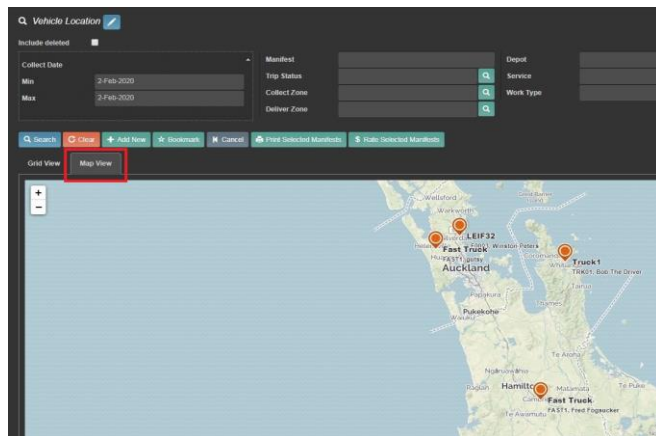


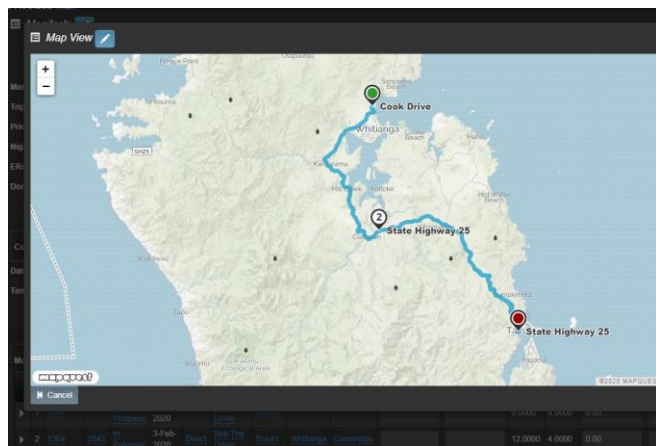
For those of you who are curious about recent enhancements to the TLP Software Suite and would like to know a little bit about what is coming up in 2020; this is for you. This version of the TLP System Update provides a small bit of information regarding the major developments over the last part of 2019 and gives an insight into what the first half of 2020 should bring.

Integrated Mapping



We now have added Map Views to your options when displaying a grid (or enquiry screen).

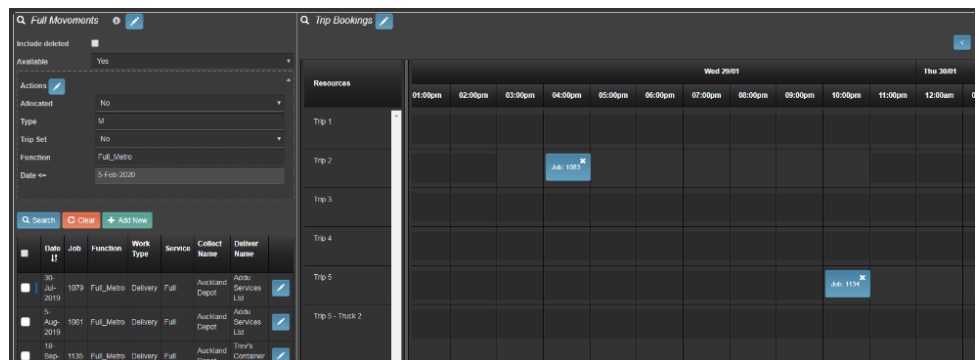
This allows you to easily view fleet location for any segment of your fleet or your fleet as a whole.



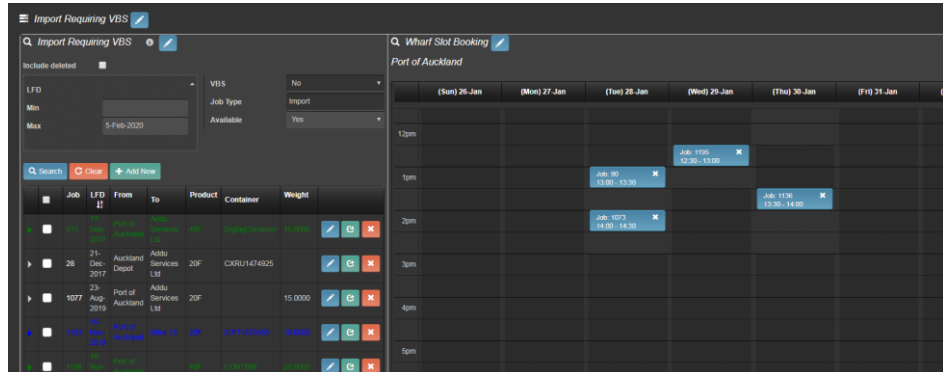
You can drill down into a run and display the history of that run on a map.

The actual route taken can be compared with the planned route if required.

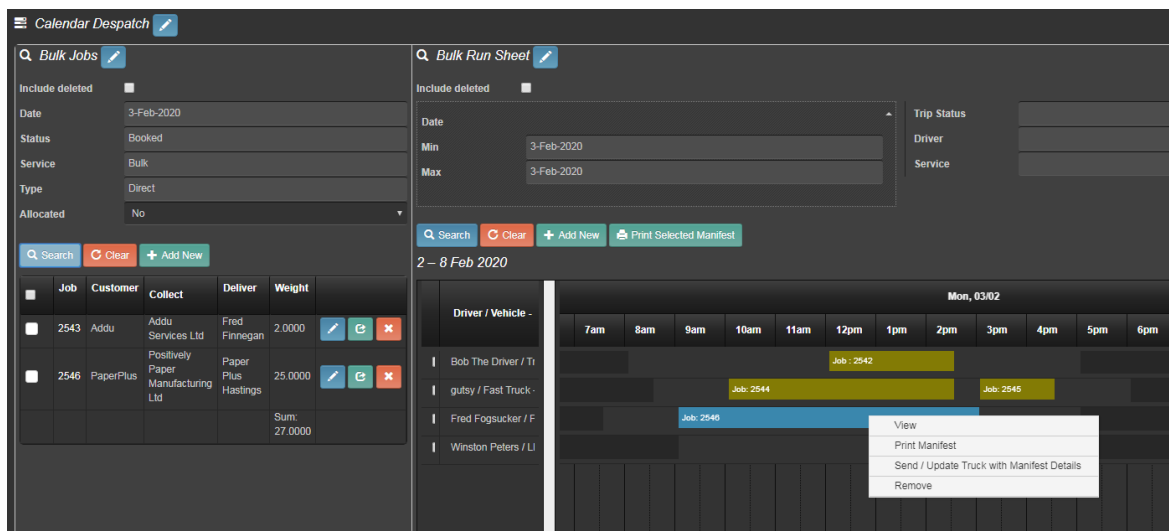
Trip Planning allows you to plan Trips (or Runs, Shifts etc) without worrying about allocation of assets. This could be a multi-day run or just part of a day.



Slot Booking allows you to manage such tasks as the booking of VBS slots at a wharf or dock doors at a Warehouse.

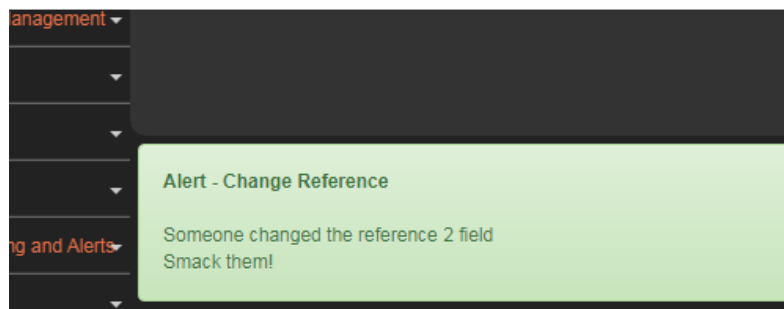


Calendar Based Despatch

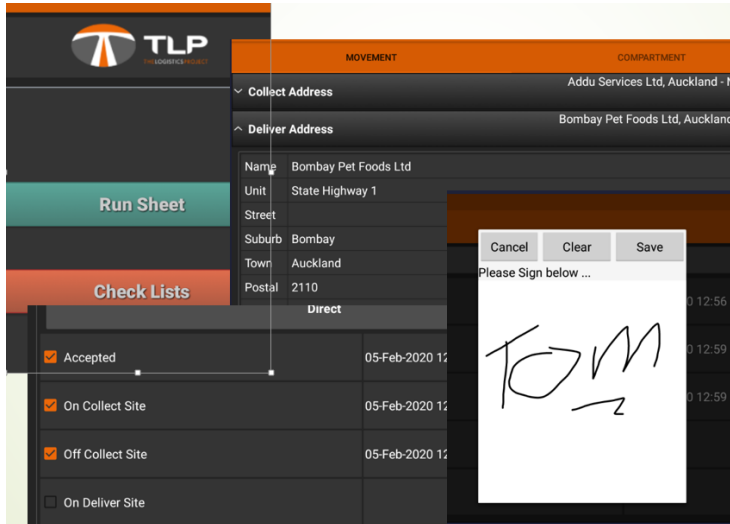


The process of job allocation has also been made simpler with the introduction of calendar based job allocation facilities. It's a simple click and drag system with operators having the ability to change the truck, remove, alter time allocated for the job and so on. Colour changes of jobs due to status and events allows the operator to easily see what stage a truck is at.

Alerts and Notifications have been provided to help with processing accuracy, reduction of costs and easy conveyance of information to other parties.



Robust Mobile Facilities

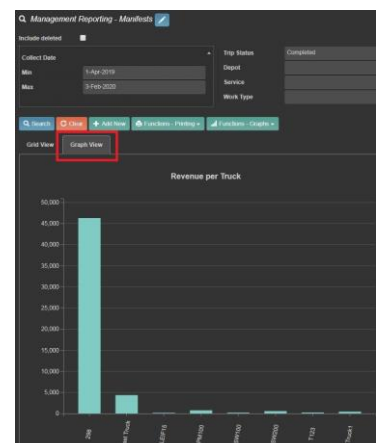
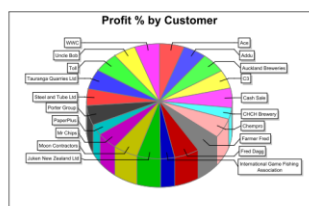
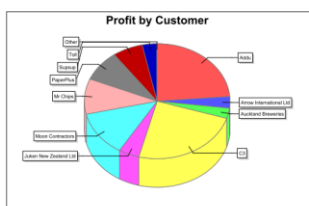
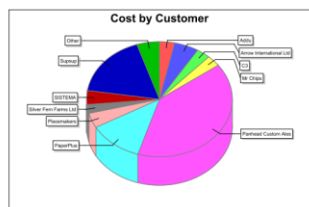
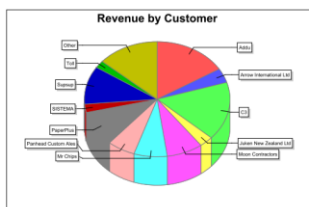
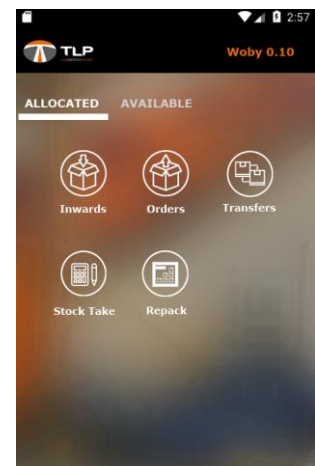


- ✓ Pre-trip check lists
- ✓ Compartment ability
- ✓ Full address details
- ✓ Mandatory references
- ✓ Edit and add item details
- ✓ Flexible Workflow
- ✓ Documents from Job
- ✓ Every stage date, time and GPS stamped
- ✓ Chep Pallet data capture
- ✓ Sign on glass

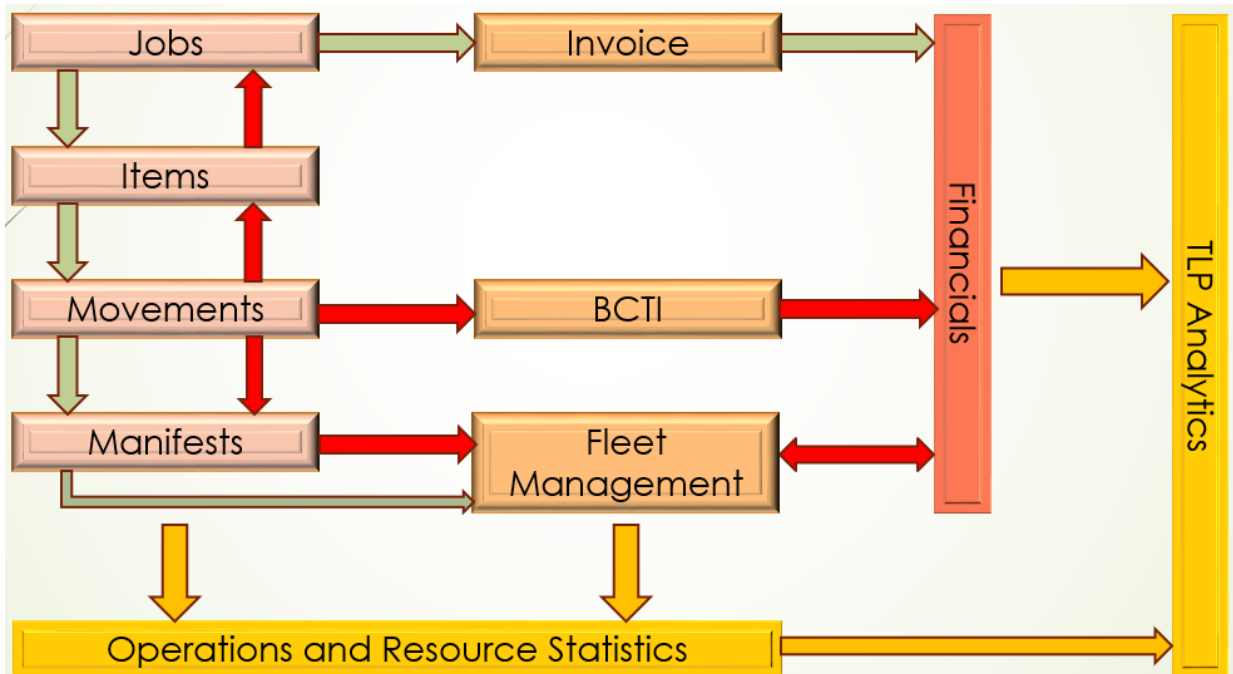
Development has commenced on WOBY, the mobile facility for Warehouse Users.

- ✓ Allocated or available work
- ✓ Various work types
- ✓ Fully integrated
- ✓ Bar code reading

Initial release expected second quarter 2020



Visibility – The Power of Integration

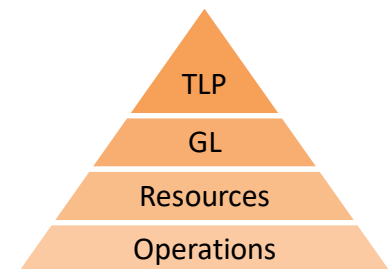


TLP Analytics has been provided to give you a full and totally integrated financial picture of your company.

It takes data from operational, financial and resource areas to enable you to gain insight as cost structures **based upon operational statistics** (kms, tonnes etc),

It enables you to easily **spot trends** such as a lowering of daily profitability

ID	Source	Account	Schema	Description	Unit	Calculation	Count
58	Warehouse		WH_Outward	Number of Orders	Actual		Yes
57	Calculation			Revenue per Kilometre	Actual	R7/R55	No
56	Manual			Work Days	Actual		No
55	Distance		RS_Distance	Distance Traveled by Fleet	Kilometres		No
54	Schema		TN_Manifest	Number of Trips	Actual		Yes
53	Job		TN_Job	Number of Jobs	Actual		Yes
52	Job		TN_Job	Tonnes Carried	Tonnes		No
50	GL Account	30398		South Island Net Contribution	Currency		No
49	GL Account	30395		South Island Expenses	Currency		No
48	GL Account	30330		Legal Costs	Currency		No
47	GL Account	30295		South Island Cost of Sales	Currency		No
46	GL Account	30195		South Island Revenue	Currency		No
45	GL Account	20398		Central Net Contribution	Currency		No



Roadmap for TLP 2020**Transport including TOBY Mobility**

- ✓ EDI Extensions
- ✓ Geo fencing alerts for TOBY users
- ✓ Photos from TOBY stored on Job
- ✓ Reporting and General Usage enhancements

Warehousing and Storage

- ✓ Release of WOBY – Mobility for Warehouse
- ✓ Container Yard Management
- ✓ Forklift Mobility Application for Container Yard
- ✓ General Usage enhancements

Financials

- ✓ Depreciation Processing
- ✓ Reporting Extensions
- ✓ General Usage enhancements

Management and Visibility

- ✓ Fleet Management reporting and graphic extensions.
- ✓ Standard TLP Analytics reporting
- ✓ Android application for Management